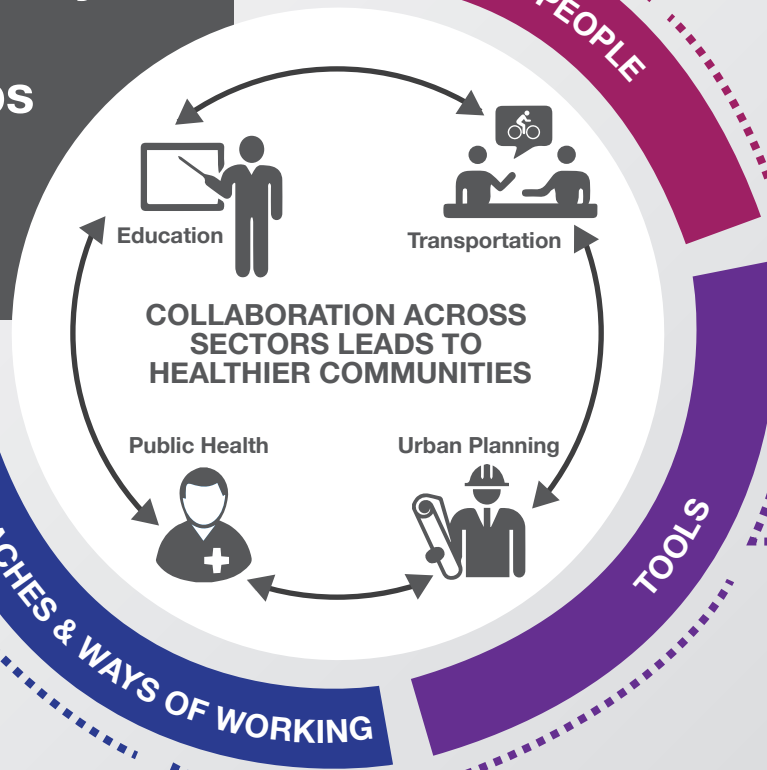


Pathways to Policy: Eight Ways To Build Successful Partnerships And Create A Path To Policy Change



Relationships:
Develop strong personal and organizational relationships



Staffing:
Create cross-sectoral positions and placements



Expertise and Technical Assistance:
Learn from experts outside your field



Tools and Resources:
Bridge knowledge gaps across sectors



Evidence and Data:
Share the right evidence for the right decision-maker



Issue Framing:
Know the decision-makers and position policy issues



Collaborative Approaches:
Find common ground and shared objectives



Positive, Open Engagement Strategies:
Learn what your partners bring to the table and what they need from you

How can you find out more?

The Pathways to Policy can help you build effective and successful multi-sectoral partnerships in your jurisdiction to support policy change.

To find out more about the Pathways to Policy - the lessons learned from collaborative projects addressing physical activity and built environment policy - please visit:

www.partnershipagainstcancer.ca/active-transportation